

Homelessness in Sonoma County

Census Population: Longitudinal Trend



 Catholic
Charities
of the Diocese of Santa Rosa




**END
POLIO
NOW**

**ROTARY
CLUB**



**SANTA ROSA
CALIFORNIA**

EXIT

Homelessness in Sonoma County

2019 Sheltered/ Unsheltered Population



Employment Status



If Unemployed, Currently...



Interest in Permanent Housing

89% of survey respondents said they would like affordable permanent housing if it became available soon.

Homelessness in Sonoma County

First Episode of Homelessness

30% indicated their current episode of homelessness was their first.

44% of those respondents were homeless for one year or more.

History of Domestic Violence

34% reported they had experienced domestic violence.

Sex Trade Involvement

16% traded sex for money or a place to stay.

7% have a history of being trafficked.



Primary Event or Condition That Led to Homelessness*

Top 4 Responses*

19%	18%	16%	12%
Lost Job	Argument with Family/Friend	Alcohol or Drug Use	Eviction

Age at First Episode of Homelessness



17%	33%	36%	14%
0-17	18-24	25-49	50+

Obstacles to Permanent Housing*

Top 4 Responses*

68%	48%	25%	24%
Can't Afford Rent	No Job/Not Enough Income	No Money for Moving Costs	No Housing Available

Duration of Current Episode of Homelessness

9%	34%	57%
30 Days or Less	1-11 Months	1 Year or More



Homelessness in Sonoma County

Government Services and Assistance

71%
of survey respondents reported receiving government benefits.



Reasons for Not Receiving Any Government Assistance*

Top 6 Responses*

31%

Don't Think I'm Eligible

24%

Don't Want Government Assistance

15%

No Permanent Address

12%

Don't Have ID

11%

Applied and Waiting for Response

11%

Never Applied

Non-Government Services Currently Accessing*

Top 6 Responses*

60%

Free Meals

44%

Bus Passes

40%

Emergency Shelter

27%

Shelter Day Services

26%

Health Services

18%

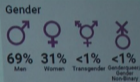
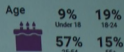
Mental Health Services



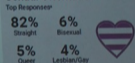
Catholic Charities

of the Diocese of Santa Rosa

Homelessness in Sonoma County



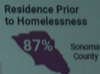
Sexual Orientation



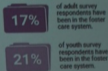
Race



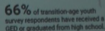
Ethnicity



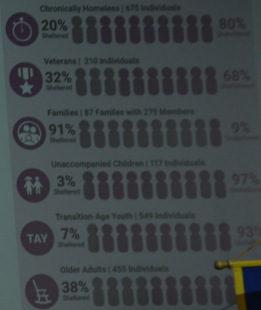
Foster Care



Educational Attainment



Subpopulation* Data



Homelessness in Sonoma County

Self-Reported Health*

Current health conditions that may affect the housing stability or employment of those experiencing homelessness.



38%

Alcohol
& Drug
Abuse



35%

Psychiatric/
Emotional
Conditions



25%

Physical
Disability



PTSD

25%

Post-
Traumatic
Stress
Disorder



23%

Chronic
Health
Problems



9%

Traumatic
Brain
Injury



3%

HIV/ AIDS
Related
Illness

Disabling Conditions

42% of survey respondents reported having at least one disabling condition.



A disabling condition is defined by HUD as a developmental disability, HIV/AIDS, or a long-term physical or mental impairment that impacts a person's ability to live independently but could be improved with stable housing.

 **Catholic Charities**
of the Diocese of Santa Rosa

The Rotary
10
PAUL H



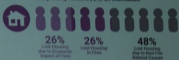
EXIT
ROTA
CLU



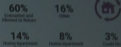
Homelessness in Sonoma County

Temporarily Housed Population

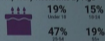
Temporarily Housed | 21,725 Individuals



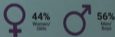
How Housing Situations Were Impacted by the Fires



Temporary Residents by Age



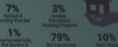
Temporary Residents by Gender



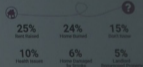
28% of households were impacted by the fires.



Temporary Residents and Connection to Housing Assistance



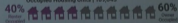
Primary Causes of Temporary Residence



Sonoma County Housing Supply

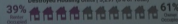
Housing Prior to Fires

Occupied Housing Units | 189,043



Housing Destroyed in Fires

Destroyed Housing Units | 5,297 (3% of Total)



Temporary Residents Access to Homeless Assistance

8% of respondents said they were receiving homeless assistance.



Catholic Charities
of the Diocese of Santa Rosa

Temporarily Housed Population

Temporarily Housed | 21,725 Individuals



26%

Lost Housing
due to Economic
Impact of Fires

26%

Lost Housing
in Fires

48%

Lost Housing
due to Non-Fire
Related Causes

Temporary Residents by Age



19%

Under 18

15%

18-24

47%

19%



Psychology of Homelessness

53% of those who experience homelessness have suffered from a brain injury

75% of those who experience homelessness have experienced a major trauma



Psychology of Homelessness

Consequences of Trauma



Homelessness Solutions

- Housing with right wrap-around services
- Strategic vision and community buy-in
- Diverse interim housing services
- Increased resources and funding with solutions that are proven
- Accountability Structures
- Multiple stakeholder governance structure with strongly coordinated system of care



EXIT

ROTARY CLUB



The Rotary Foundation
100%
PAUL HARRIS FELLOWSHIP
CLUB
2020-2021
Rotary

END POLIO NOW